

## ABOUT US

We are a Drone Manufacturer with a team of GIS Experts, Pilots, Engineers using Drones to solve real world problems.

SenseImage Technologies Private Limited was established in July 2017 with a mission to provide Drone-based solutions for applications in industry and government institutions. Experienced Engineers with specializations in Aeronautics and Geospatial Technologies were involved in the development of Senseimage Technologies to become a successful Research & Development based UAV/Drone solution provider.



## INDUSTRIES WE SERVE



+91 44-45050259



Info@senseimage.in  
www.senseimage.in



**SenseImage Technologies**  
No: 51, Rattha Tek Meadows, Tower C,  
5th Floor, Sholinganallur, OMR,  
Chennai-119



SCAN ME



# + SENSEIMAGE TECHNOLOGIES

We are a Drone Manufacturer with a team of GIS Experts, Pilots, Engineers using Drones to solve Real world problems.



# WE CHANGE THE WAY YOU THINK



# OUR SERVICES



# SENSEIMAGE TECHNOLOGIES



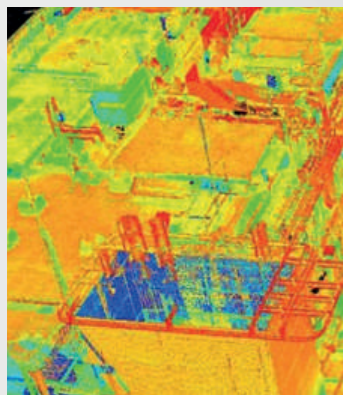
## AERIAL MAPPING

Drone mapping is simply another form of aerial mapping. Prior to the pervasive use of drones, large areas were mapped using manned aircraft, typically helicopters. Drone mapping is a way to do this job more cost-effectively, safely and efficiently.



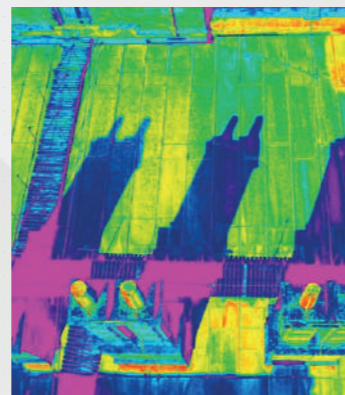
## ENGINEERING GRADE SURVEYS

Senselimage Technologies leverages the latest in geomatics, Unmanned Aerial System (UAS) technology and expertise to acquire seamless topographic information and aerial imagery which serve a wide variety of engineering projects.



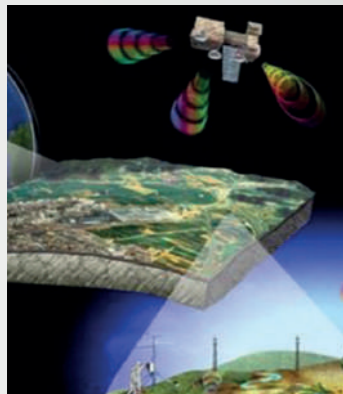
## LASER SCANNING

Senselimage Technologies has the unique capability to extract engineering grade Digital Terrain Model (DTM) from Digital Surface Models (DSM) making it possible to have buildings, trees, vehicles, fences, vegetation and other 'off-terrain' surface features removed from elevation data to produce an engineering ready 'bare-earth' or 'ground' surface.



## THERMAL INSPECTIONS & MAPPING

Senselimage Technologies has a unique capability to acquire and merge thermal and RGB imagery using high performance Unmanned Aerial Systems (UAS) and advanced image processing applications to produce highly accurate two and three dimensional mappings of the thermal characteristics of any structure.



## GIS, REMOTE SENSING & SPATIAL ANALYSIS

Through the integration of geospatial and associated technologies with whole business information solutions, we aspire to assist our clients in achieving increased planning effectiveness and operational efficiency.



## AERIAL GAS DETECTION/ PIPELINE MONITORING

Senselimage Technologies is a world leader in the successful development of the first unmanned aerial gas detection system. The gas detection system utilizes the latest in Unmanned Aerial Systems (UAS) technology equipped with cutting-edge laser mass spectrometer to effectively detect gasses down to 1 ppm.

# DRONES



FALCON A6



SKYCOPTER X6



SKYCOPTER A6 PLUS



SKYCOPTER MCA-6



SKYHUNTER VTOL

# PAYLOADS



IDM X1



OBLIQUE CAMERA



THERMAL CAMERA



ZOOM CAMERA



LIDAR SI-260X



MAP 01

# ABOUT US

We are a Drone Manufacturer with a team of GIS Experts, Pilots, Engineers using Drones to solve real world problems.

SenseImage Technologies Private Limited was established in July 2017 with a mission to provide Drone-based solutions for applications in industry and government institutions. Experienced Engineers with specializations in Aeronautics and Geospatial Technologies were involved in the development of Senseimage Technologies to become a successful Research & Development based UAV/Drone solution provider.



## INDUSTRIES WE SERVE



+91 44-45050259



Info@senseimage.in  
www.senseimage.in



**SenseImage Technologies**  
No: 51, Rattha Tek Meadows, Tower C,  
5th Floor, Sholinganallur, OMR,  
Chennai-119



SCAN ME



# + SENSEIMAGE TECHNOLOGIES

We are a Drone Manufacturer with a team of GIS Experts, Pilots, Engineers using Drones to solve Real world problems.



# WE CHANGE THE WAY YOU THINK



## OUR SERVICES



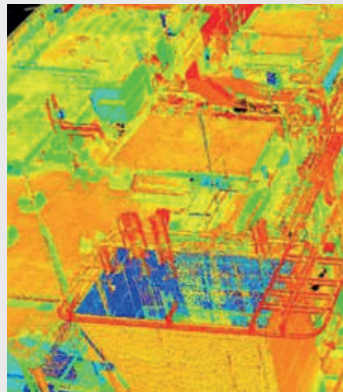
### AERIAL MAPPING

Drone mapping is simply another form of aerial mapping. Prior to the pervasive use of drones, large areas were mapped using manned aircraft, typically helicopters. Drone mapping is a way to do this job more cost-effectively, safely and efficiently.



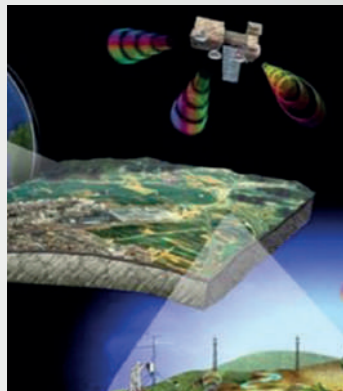
### ENGINEERING GRADE SURVEYS

Senselimage Technologies leverages the latest in geomatics, Unmanned Aerial System (UAS) technology and expertise to acquire seamless topographic information and aerial imagery which serve a wide variety of engineering projects.



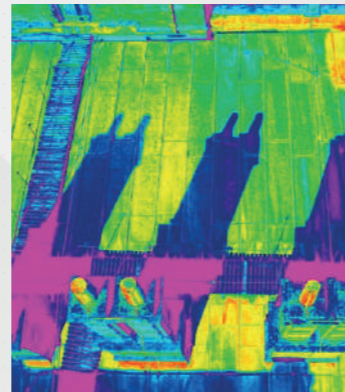
### LASER SCANNING

Senselimage Technologies has the unique capability to extract engineering grade Digital Terrain Model (DTM) from Digital Surface Models (DSM) making it possible to have buildings, trees, vehicles, fences, vegetation and other 'off-terrain' surface features removed from elevation data to produce an engineering ready 'bare-earth' or 'ground' surface.



### GIS, REMOTE SENSING & SPATIAL ANALYSIS

Through the integration of geospatial and associated technologies with whole business information solutions, we aspire to assist our clients in achieving increased planning effectiveness and operational efficiency.



### THERMAL INSPECTIONS & MAPPING

Senselimage Technologies has a unique capability to acquire and merge thermal and RGB imagery using high performance Unmanned Aerial Systems (UAS) and advanced image processing applications to produce highly accurate two and three dimensional mappings of the thermal characteristics of any structure.



### AERIAL GAS DETECTION/ PIPELINE MONITORING

Senselimage Technologies is a world leader in the successful development of the first unmanned aerial gas detection system. The gas detection system utilizes the latest in Unmanned Aerial Systems (UAS) technology equipped with cutting-edge laser mass spectrometer to effectively detect gasses down to 1 ppm.

# SENSEIMAGE TECHNOLOGIES

## DRONES



FALCON A6



SKYCOPTER X6



SKYCOPTER A6 PLUS



SKYCOPTER MCA-6



SKYHUNTER VTOL

## PAYLOADS



IDM X1



OBLIQUE CAMERA



THERMAL CAMERA



ZOOM CAMERA



LIDAR SI-260X



MAP 01